
PUBLIC SCHOOLS of
BROOKLINE

Advisory Panel 4:
Public Health, Safety, & Logistics

Meeting Slides

October 15, 2021

Announcement: Vaccination Clinics

GET THE **SHOT,**
NOT THE **FLU!**

2021 Brookline Seasonal Flu Clinic



**SCHLUNTZ GYMNASIUM
BROOKLINE HIGH SCHOOL
115 GREENOUGH STREET**

**SUNDAY, OCTOBER 24, 2021
9 AM - 3 PM**

**REGISTER ONLINE OR BY PHONE
TODAY!**

VISIT [HTTPS://BIT.LY/3TZP989](https://bit.ly/3TZP989), USE THE QR OR
CALL (617) 730-2641



Mask required.



Stay home if you feel ill.



Bring a form of ID and health insurance cards.



Wear loose-sleeved clothing for arm scans.



Limited flu mist available.
No high dose for 65+

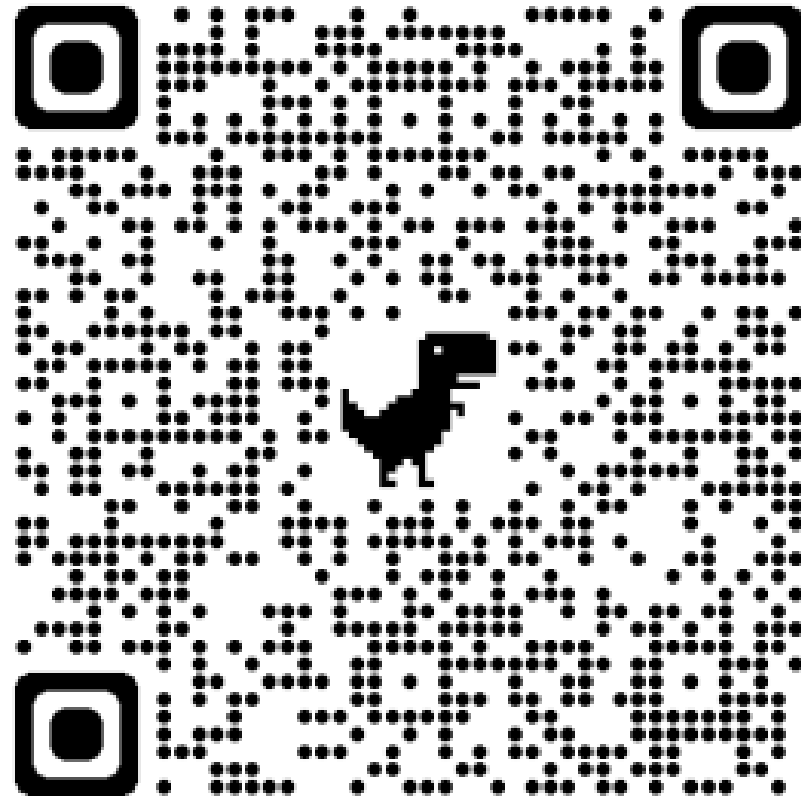


Families welcome.



**OPEN TO BROOKLINE RESIDENTS
ADULTS | SENIORS | CHILDREN* (6 MONTHS AND OLDER)**

Brookline Department of Public Health & Human Services
(617) 730-2300 | www.brookline.ma.gov/health



Community Benchmarks - Status

Benchmark (each measured over prior 14 days)	Status 8/28/21	Status 9/11/21	Status 9/25/21	Status 10/9/21
Avg. daily new case count in Brookline = <10 per 100k people	10.7	10.6	10.8	6.4
Avg. daily new case count in Mass. = <10 per 100k people	19.5	23.1	22.7	19.0
Avg. test positivity rate in Brookline = <5.0%	1.22%	0.80%	0.73%	0.46%
Avg. test positivity rate in Massachusetts = <5.0%	2.74%	2.35%	2.09%	1.82%

Panel 4 selected these four community transmission benchmarks in August 2020 as triggers for focused evaluation and discussion of whether changes in operations are warranted, not as definitive indicators of in-school risk or thresholds for automatic action. Research and PSB-specific data since that time have convincingly shown that in-school transmission risk can be kept very low even at high levels of community case incidence.

MA DPH Color Scale



Incidence Rate Color Table
 Massachusetts Department of Public Health COVID-19 Dashboard - Thursday, November 12, 2020
Average Daily Incidence Rate per 100,000 Color Calculations

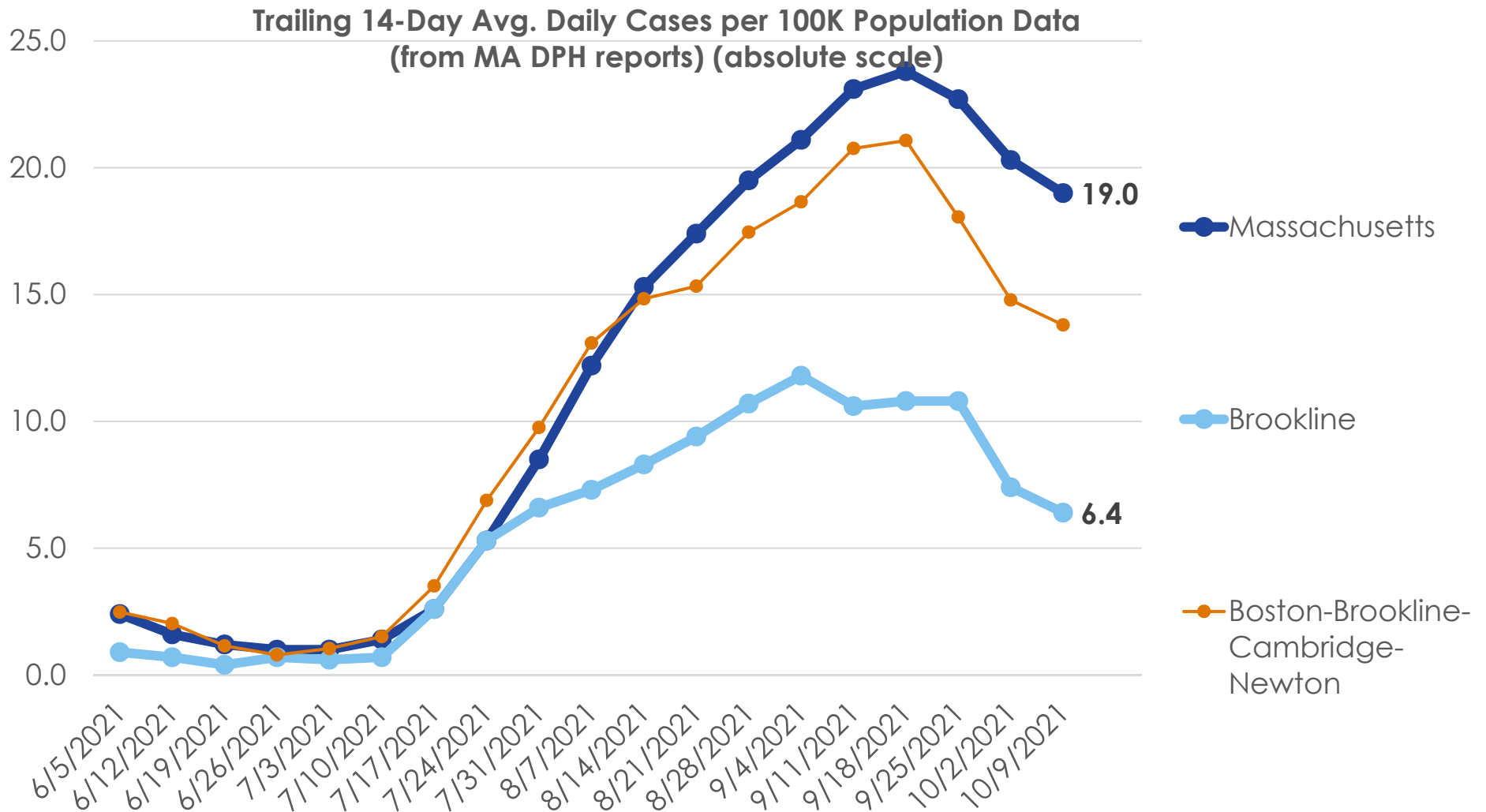
Group	Population		
	Under 10K	10K-50K	Over 50K
Grey	Less than or equal to 10 total cases	Less than or equal to 10 total cases	Less than or equal to 15 total cases
Green	Less than or equal to 15 total cases	<10 avg cases/100k AND >10 total cases	<10 avg cases/100k AND >15 total cases
Yellow	Less than or equal to 25 total cases	≥10 avg cases/100k OR ≥5% pos rate	≥10 avg cases/100k OR ≥ 4% pos rate
Red	More than 25 total cases	≥10 avg cases/100k AND ≥5% pos rate	≥10 avg cases/100k AND ≥4% pos rate

Brookline is here as of 10/9/2021 (green)

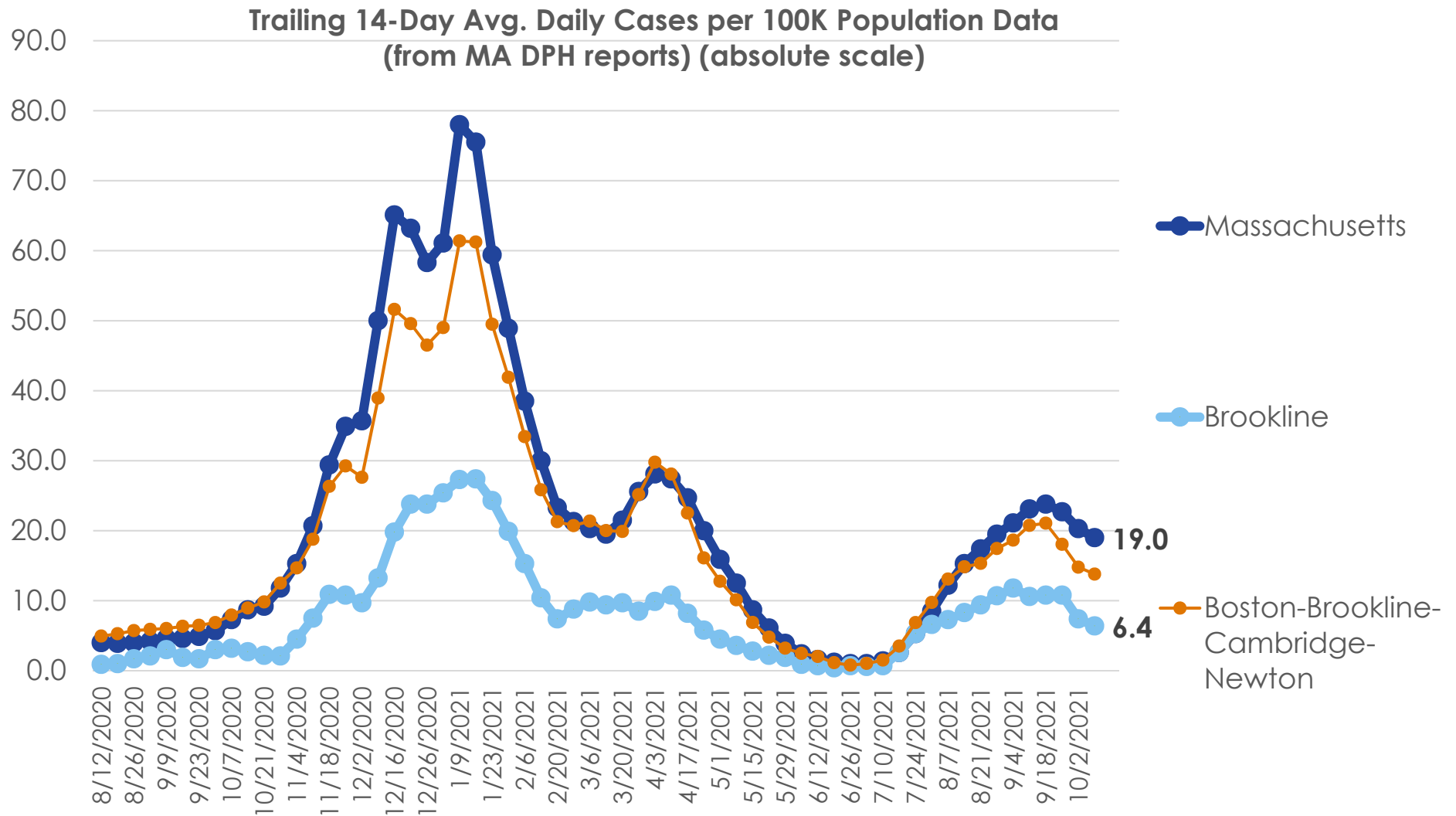
Brookline's population is ~60,000

As of 11/5, DPH is using 2019 population estimates derived from a method developed by the University of Massachusetts Donahue Institute. The 2019 estimates are the most currently available data.

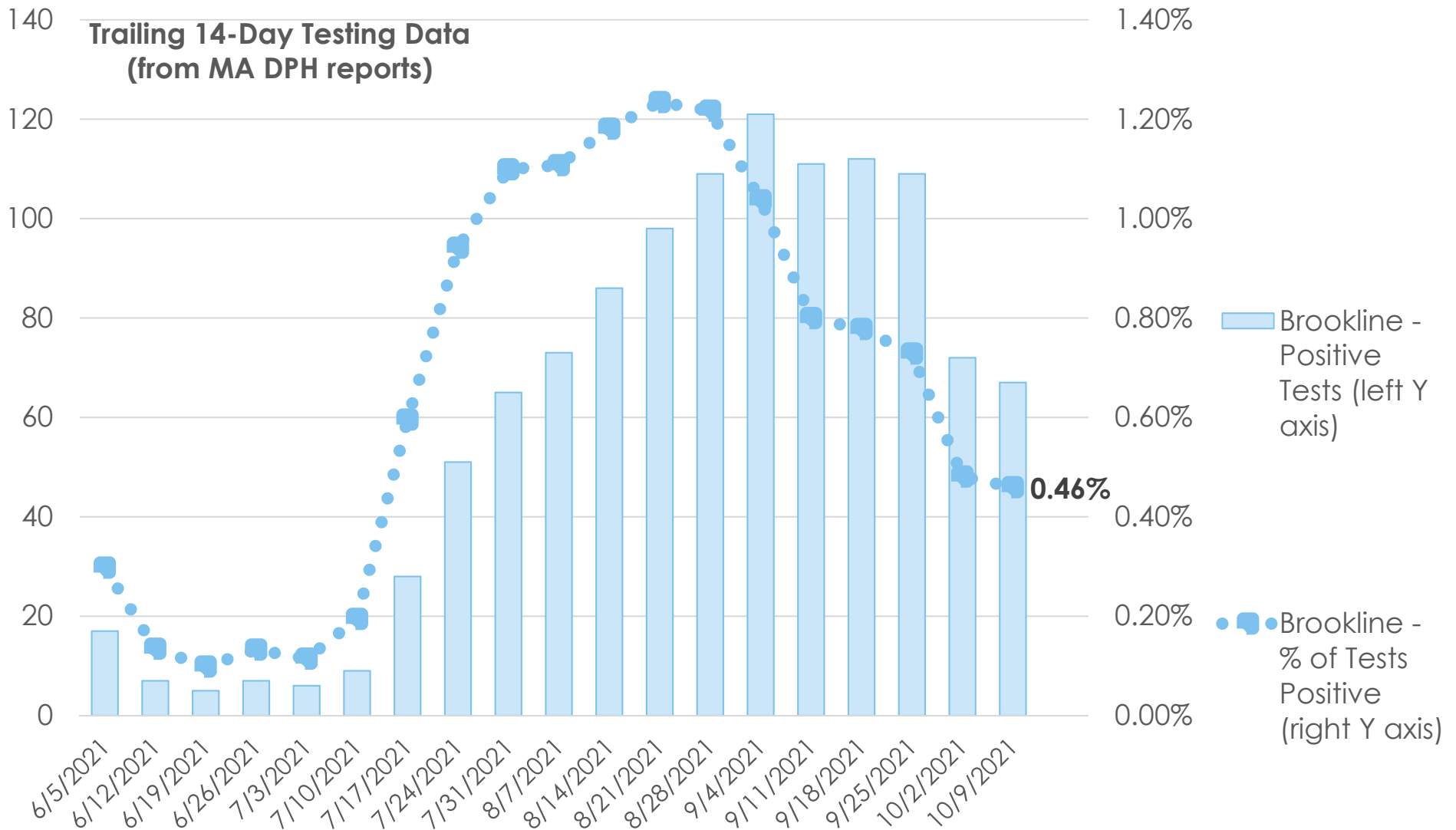
Trends: Avg. Daily New Cases per 100k



Trends: Avg. Daily New Cases per 100k

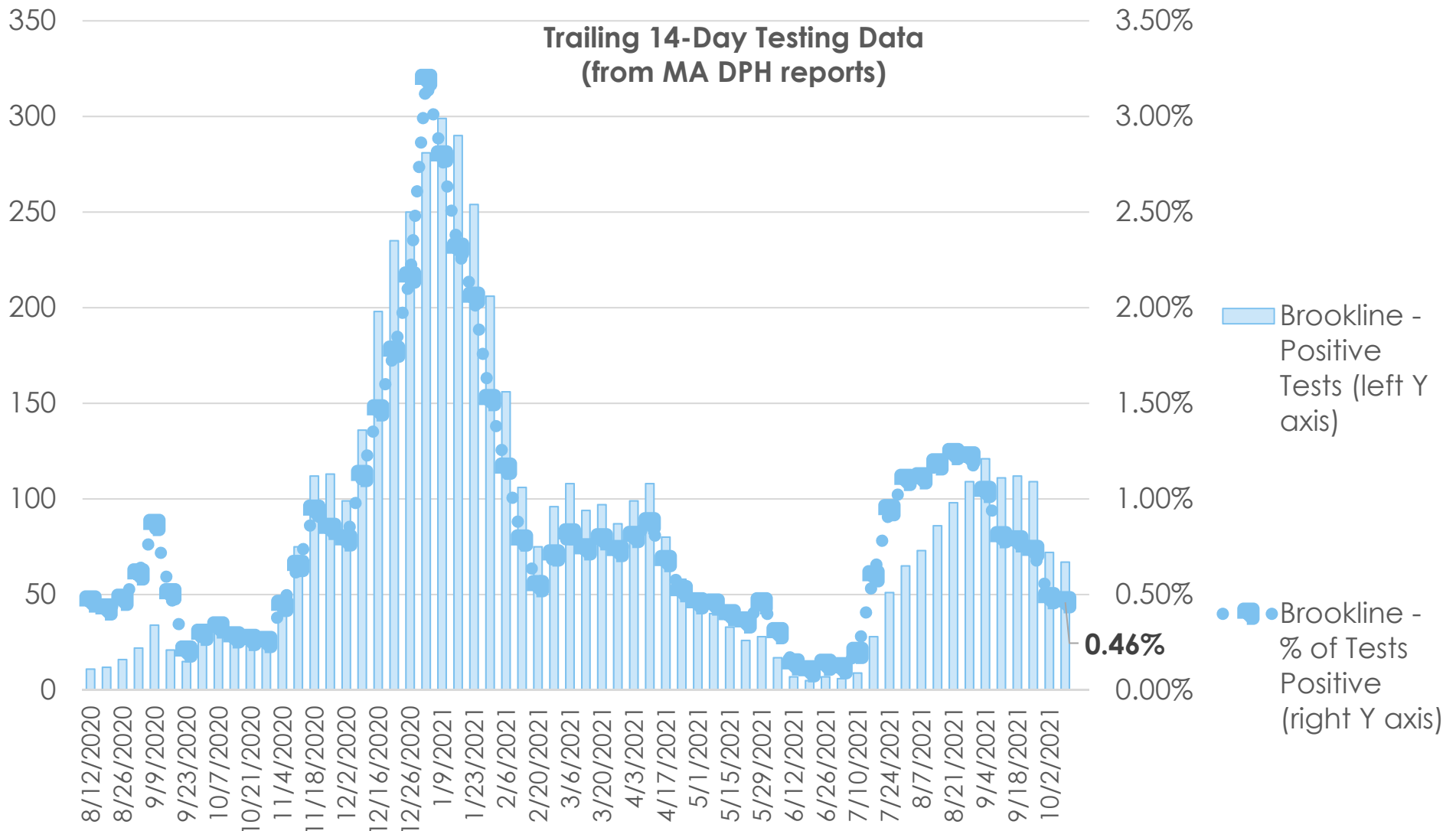


Trends: Test Positivity (Brookline)



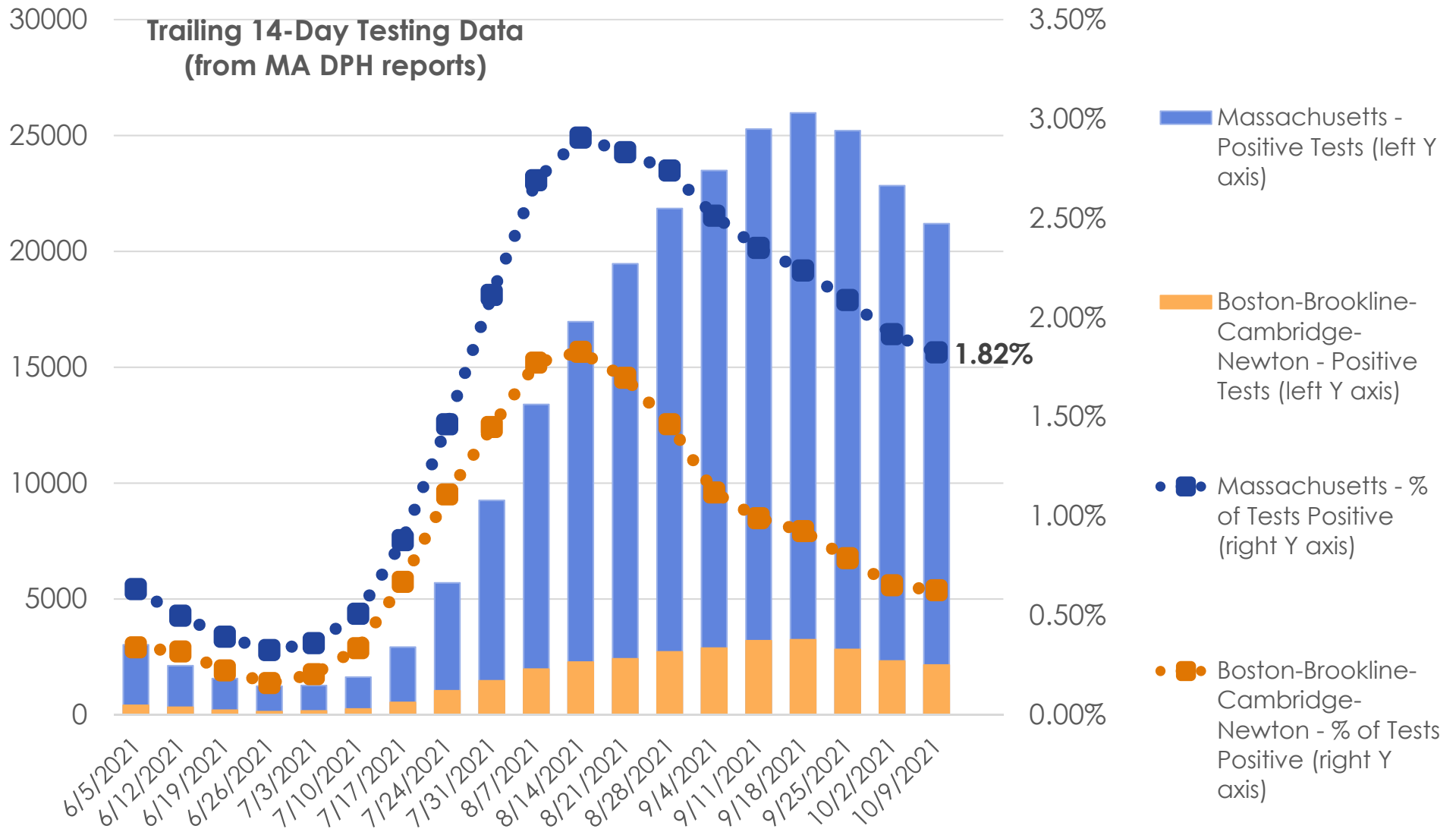
Data source: <https://www.mass.gov/info-details/covid-19-response-reporting>

Trends: Test Positivity (Brookline)



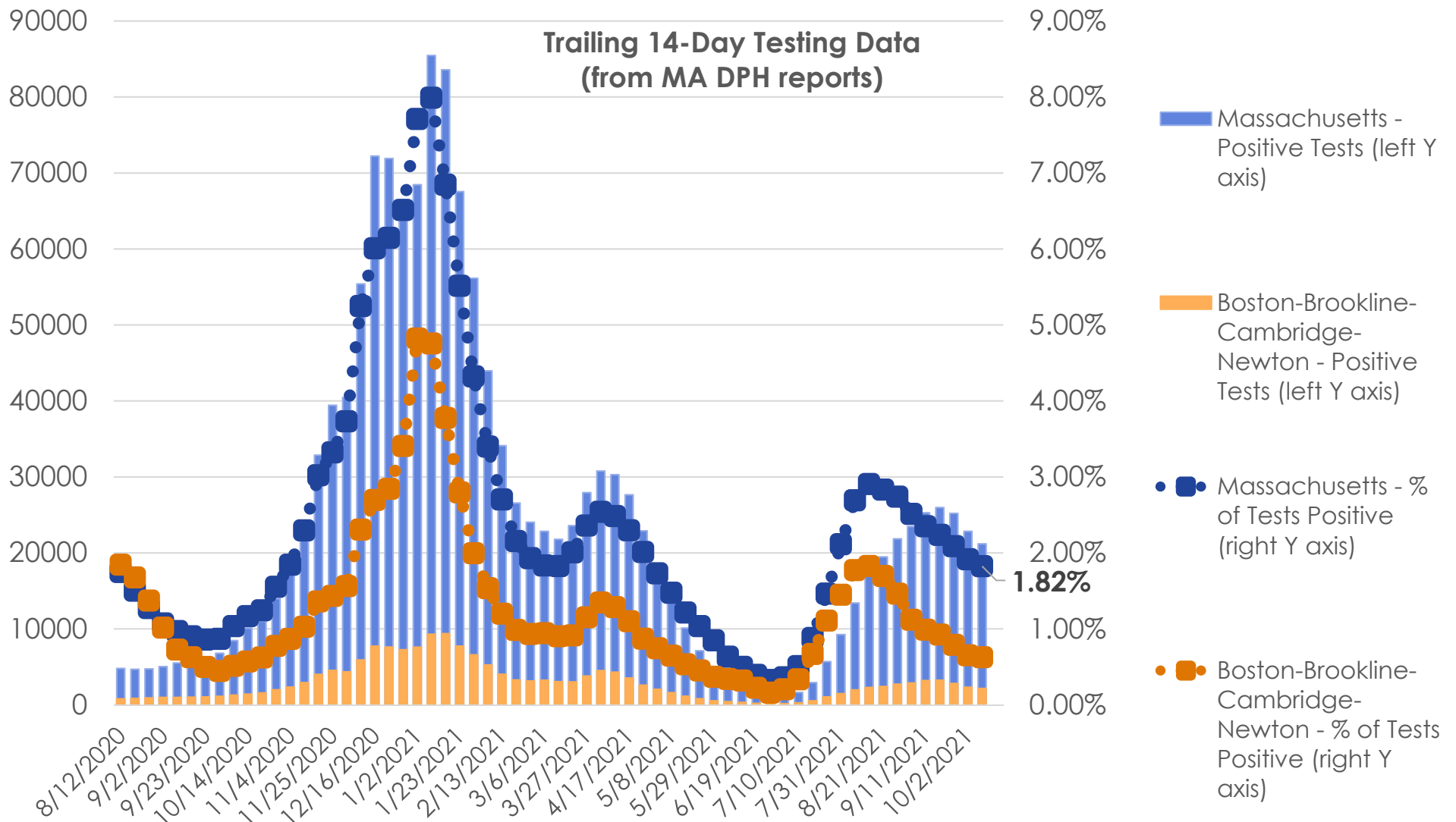
Data source: <https://www.mass.gov/info-details/covid-19-response-reporting>

Trends: Test Positivity (Statewide)



Data source: <https://www.mass.gov/info-details/covid-19-response-reporting>

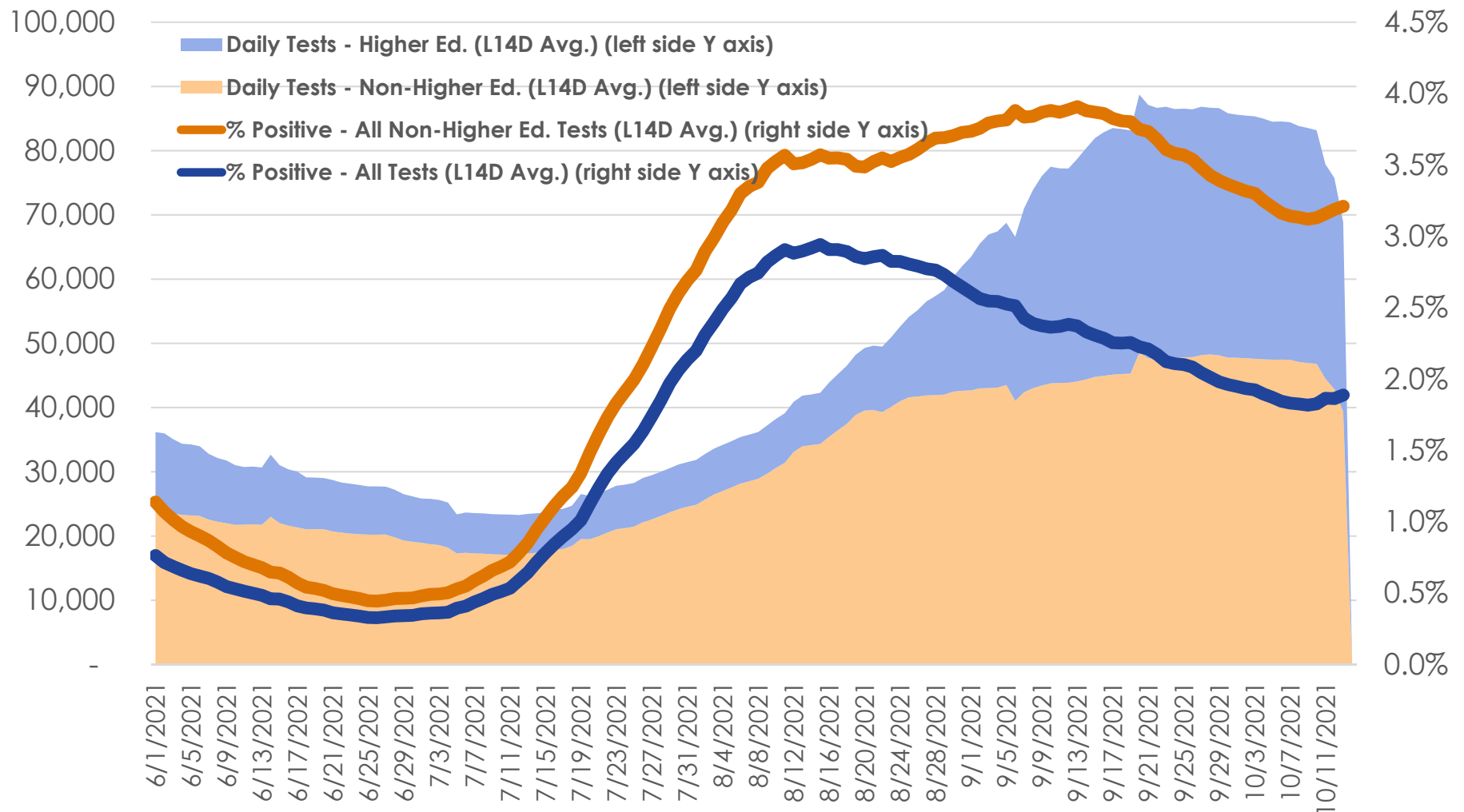
Trends: Test Positivity (Statewide)



Data source: <https://www.mass.gov/info-details/covid-19-response-reporting>

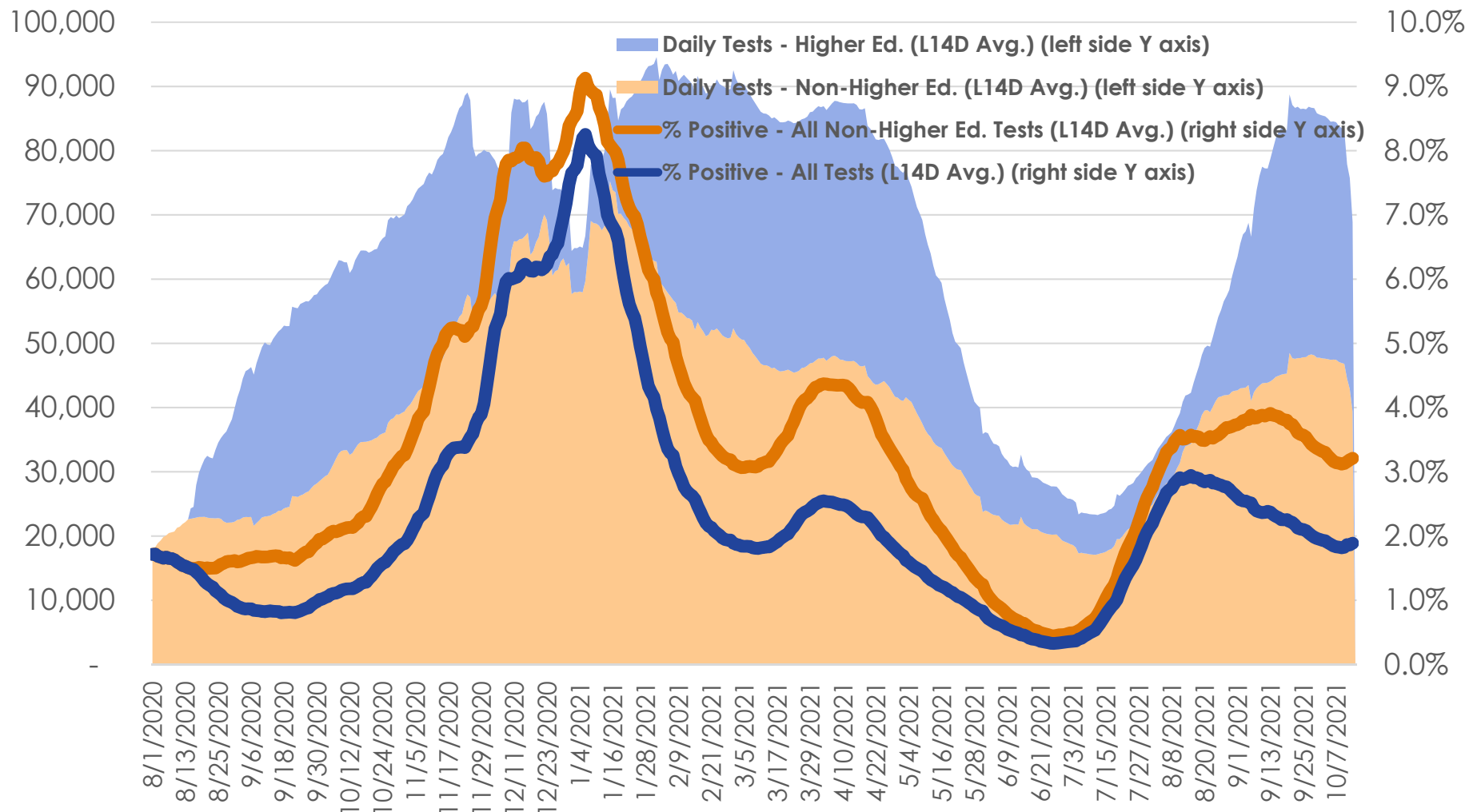
Trends: Test Positivity and Testing Volume (Statewide)

MA Statewide Test Positivity and Volume

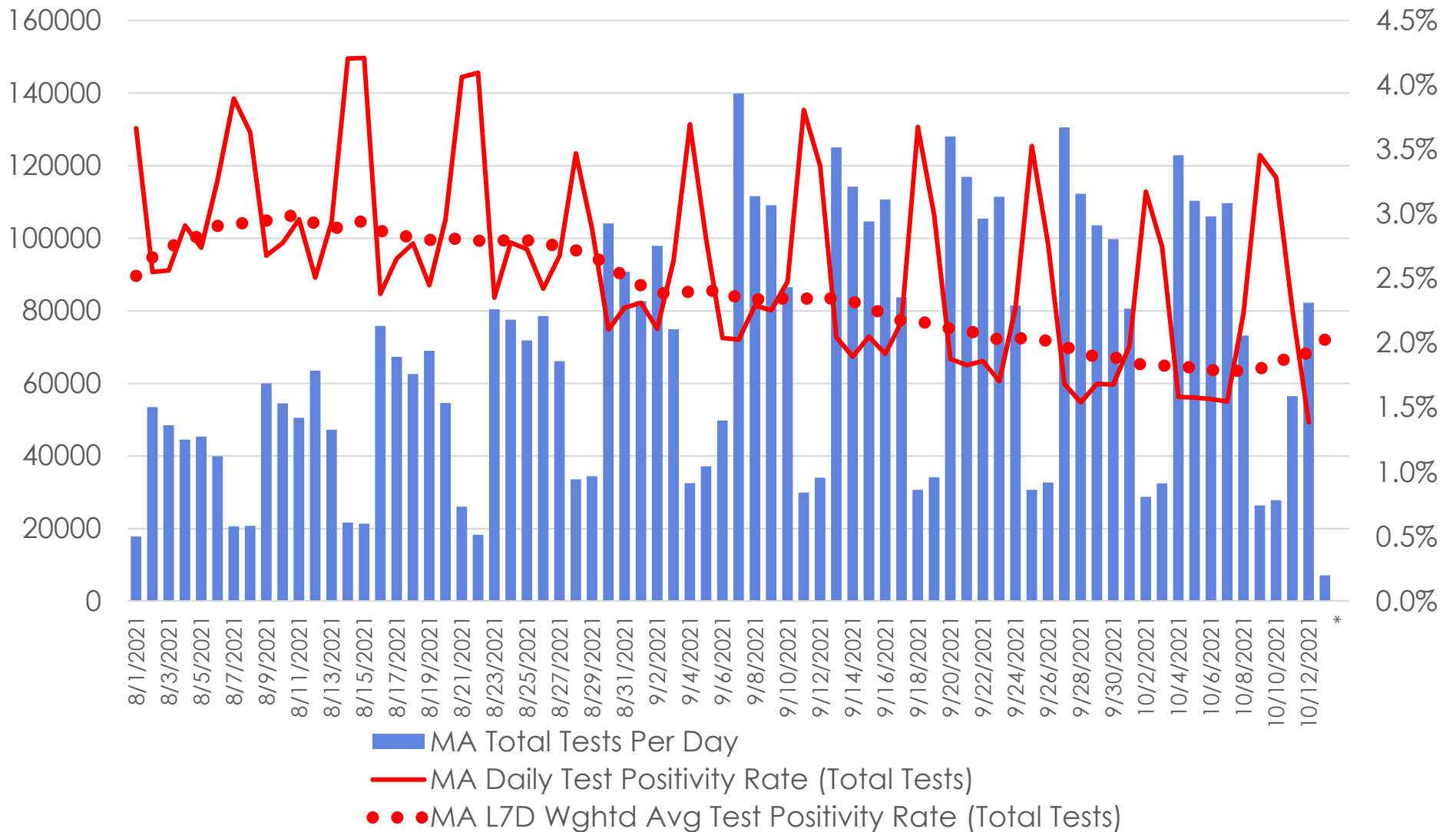


Trends: Test Positivity and Testing Volume (Statewide)

MA Statewide Test Positivity and Volume

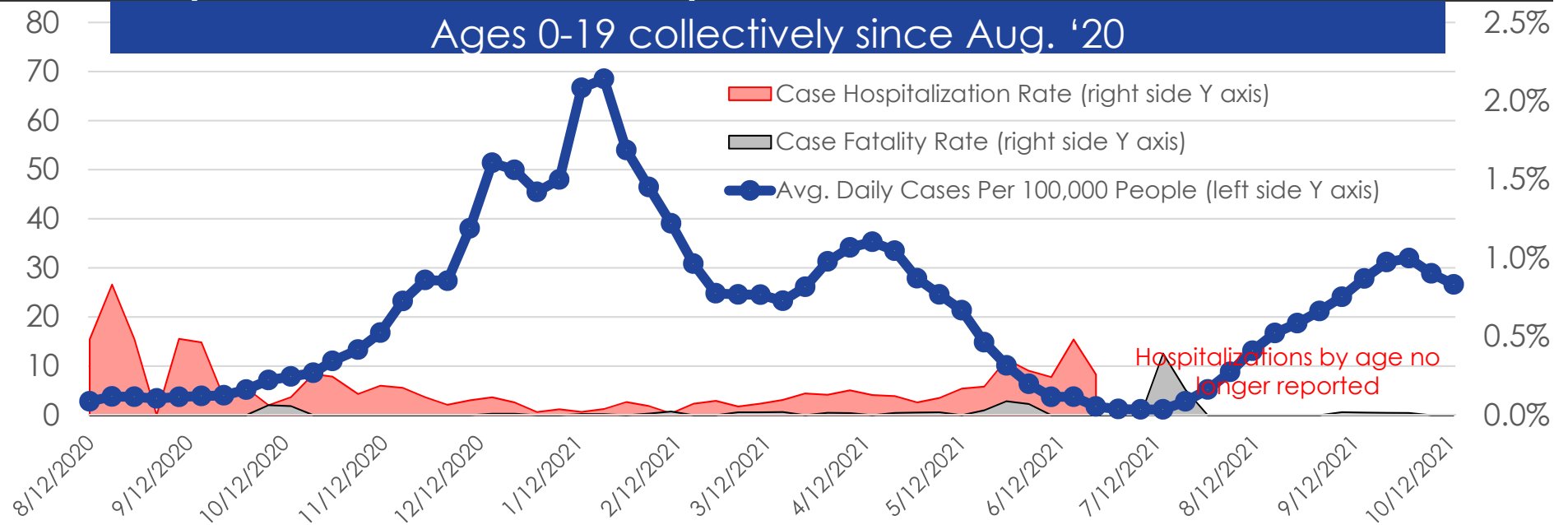


Trends: Daily Test Volumes and Positivity (Statewide)



Data source: <https://www.mass.gov/info-details/covid-19-response-reporting>

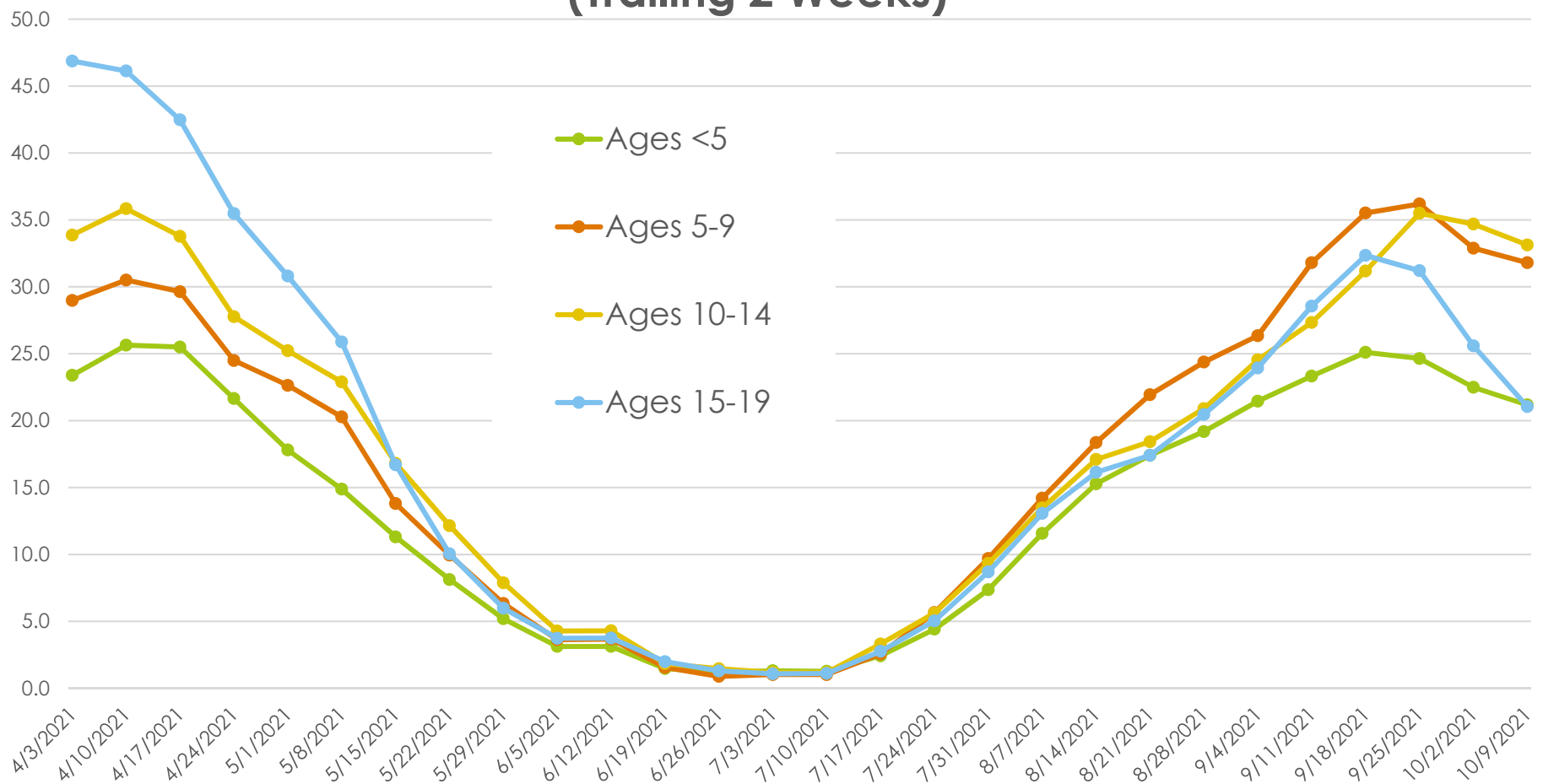
Trends: 0-19 Year-Old Age Cohort (MA Statewide)



Total Cases (Avg. Daily per 100k Pop.)	5/30 – 6/12/2021	8/1 – 8/14/2021	9/26 – 10/9/2021
<5 yo (unvaxxed)	157 (3.1)	767 (15.3)	1,063 (21.2)
5-9 yo (unvaxxed)	190 (3.7)	950 (18.4)	1,645 (31.8)
10-14 yo (some vaxxed)	240 (4.3)	954 (17.1)	1,848 (33.1))
15-19 yo (~1/2 vaxxed)	243 (3.8)	1,044 (16.1)	1,361 (21.0)
All ages (mostly vaxxed)	2,689 (2.8)	16,240 (16.7)	20,025 (20.5)

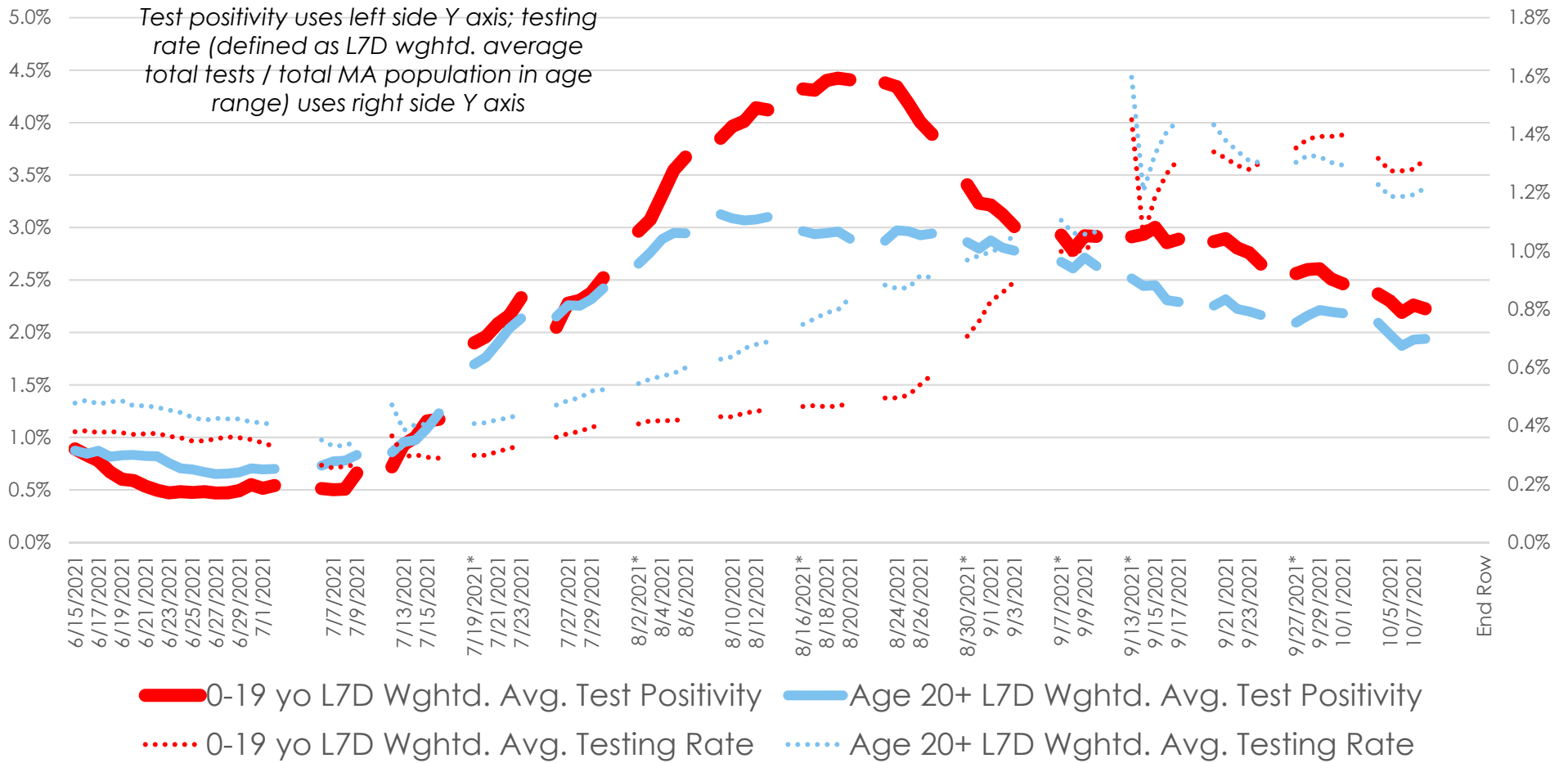
Trends: 0-19 Year-Old Age Cohort (MA Statewide)

Avg. Daily Cases Per 100k Pop. in Age Range (Trailing 2 Weeks)



Trends: 0-19 Year-Old Age Cohort vs. Adults (MA Statewide)

MA Statewide Average Testing Rates and Test Positivity by Age Group

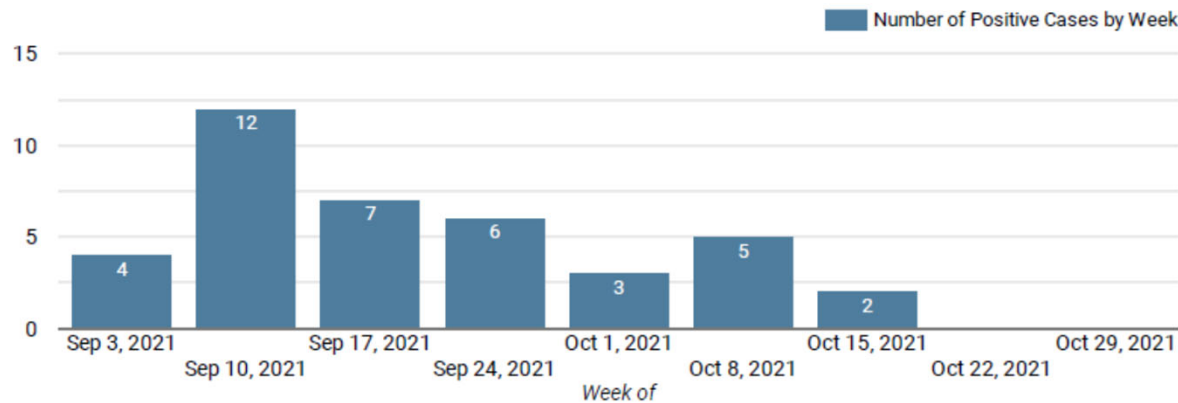


COVID-19 CASES: DISTRICT DASHBOARD (SY2021-22)

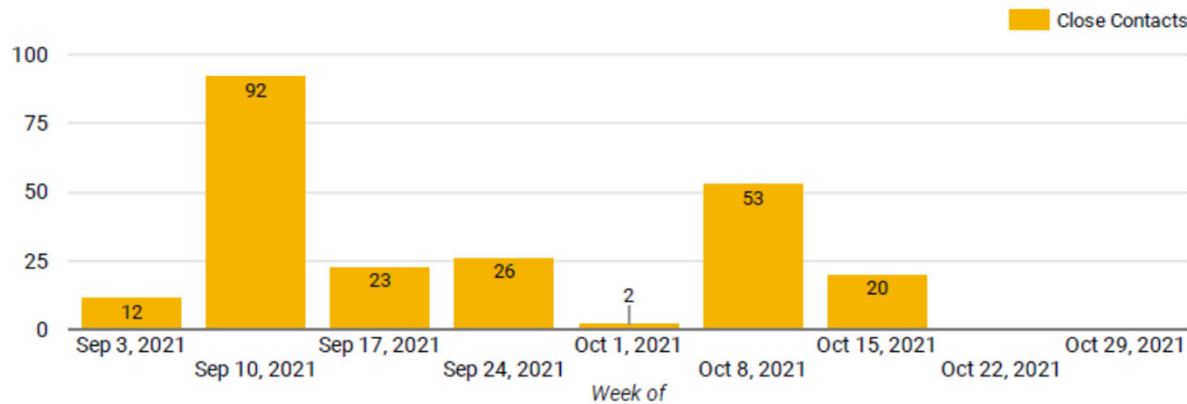
Dashboard outlines number of positive COVID-19 cases in the PSB school community by week and learning model. For the purpose of this dataset, weeks run **Friday to Thursday**.

Source: Public Schools of Brookline School Health Services Department

Number of Positive Cases, by Week



Number of Close Contacts, by Week



TOTAL PSB CASES TO DATE: 39

Students: 29

Staff: 10

Total cases among school-based students and staff: 39

TOTAL CLOSE CONTACTS*: 228 close contacts connected to 24 cases

Total positive cases with no close contacts* at school: 15

**Close contacts are defined as anyone has interacted with a COVID-19 positive individual under the following circumstances: The interaction must be indoors, within six feet of distance, lasted for a combined total of 15 minutes or more over a 24 hour period, and occurred within a 48 hour period before the individual tested positive/displayed symptoms for COVID-19.*

COVID-19 CASES: SCHOOL BY SCHOOL DASHBOARD (SY2021-22)

The table outlines the number of positive COVID-19 cases by week and the number of cumulative cases for the year at each school. For the purpose of this dataset, weeks run **Friday to Thursday**.
Source: Public Schools of Brookline School Health Services Department

Number of Positive Cases, by School & District Offices (Week of 10/8 - 10/14)

School/Building ^	Weekly Positive Cases	Cumulative Positive Cases	Weekly Close Contacts	Cases with Close Contacts
BEEP @ Beacon	0	0	-	-
BEEP @ Clark	0	0	-	-
BEEP @ Lynch	0	0	-	-
BEEP @ Putterham	0	0	-	-
Baker	0	8	-	-
Brookline High School	0	7	-	-
Driscoll	0	2	-	-
Florida Ruffin Ridley	2	2	40	1
Heath	0	8	-	-
Lawrence	0	5	-	-
Lincoln	0	1	-	-
Pierce	0	6	-	-
Runkle	0	0	-	-
Total	2	39	40	1

School/Building	Weekly Positive Cases	Cumulative Positive Cases	Close Contacts	Cases with Close Contacts
District Office	0	0	-	-

COVID-19 CASES: GRADE LEVEL AND STAFF DASHBOARD (SY2021-22)

The table outlines the number of positive COVID-19 cases by week and the number of cumulative cases for the year at each school. For the purpose of this dataset, weeks run **Friday to Thursday**.
Source: Public Schools of Brookline School Health Services Department

Total Number of Positive Cases, by Grade Level and Staffing (Week of 10/8 - 10/14)

Grade Level	Weekly Positive Cases	Cumulative Positive Cases
BEEP/Pre-K	0	0
Kindergarten	0	4
1st Grade	0	1
2nd Grade	0	5
3rd Grade	0	3
4th Grade	1	4
5th Grade	0	1
6th Grade	0	3
7th Grade	0	1
8th Grade	0	0
9th Grade	0	2
10th - 12th Grade	0	5
Staff (School-Based)	1	10
Staff (District Office)	0	0
Total	2	39

Travel Rules: Domestic

- MA has no current COVID-specific travel restrictions. Public guidance focuses on fully vaccinated individuals and does not address others except to encourage vaccination.

CORONAVIRUS DISEASE 2019 (COVID-19)

- CDC:
(8/25/2021)

Domestic Travel RECOMMENDATIONS AND REQUIREMENTS	Not Vaccinated	Fully Vaccinated
Get tested 1-3 days before travel	✓	
Get tested 3-5 days after travel and self-quarantine for 7 days. Self-quarantine for 10 days if you don't get tested.	✓	
Self-monitor for symptoms	✓	✓
Wear a mask and take other precautions during travel	✓	✓



[cdc.gov/coronavirus](https://www.cdc.gov/coronavirus)

CS323515-A 04/02/2021

Source: <https://www.mass.gov/info-details/covid-19-travel>; <https://www.cdc.gov/coronavirus/2019-ncov/travelers/travel-during-covid19.html>

Travel Rules: International

- MA has no current COVID-specific travel restrictions. Public guidance focuses on fully vaccinated individuals and does not address others except to encourage vaccination.

CORONAVIRUS DISEASE 2019 (COVID-19)

- CDC:
(8/25/2021)

International Travel RECOMMENDATIONS AND REQUIREMENTS	Not Vaccinated	Fully Vaccinated
Get tested 1-3 days before traveling out of the US	✓	
Mandatory test required before flying to US	✓	✓
Get tested 3-5 days after travel	✓	✓
Self-quarantine after travel for 7 days with a negative test or 10 days without test	✓	
Self-monitor for symptoms	✓	✓
Wear a mask and take other precautions during travel	✓	✓



[cdc.gov/coronavirus](https://www.cdc.gov/coronavirus)

CS323515-A 04/02/2021

Source: <https://www.mass.gov/info-details/covid-19-travel>; <https://www.cdc.gov/coronavirus/2019-ncov/travelers/international-travel-during-covid19.html>

Travel Rules: PSB

What are the current travel restrictions? Will I be able to travel out of state without a quarantine?

Massachusetts [COVID-19 Travel Guidance](#) suggests that if you are vaccinated there are no restrictions on domestic travel, and you can travel freely. Here are the CDC's recommendations for [unvaccinated people, including a viral test 3-5 days after and self-quarantine for a full 7 days after travel](#). Since children under the age of 12 are ineligible for a vaccine, we anticipate that families may have questions. We request that all PSB families and staff follow the State's travel guidance. Qualifying special conditions include serious family emergencies/illnesses, deaths, and custody arrangements. If you have questions, please contact your principal or school nurse.

Source:

https://docs.google.com/document/d/1OL7nGMZXwBTfAXU47JvI_tANaLZmLEzI2fBWTM21DAE/edit?fbclid=IwAR1cWOnGD6Hn4W3oBEYU7Av8sJ6pXtSHqtY2JtbN8HaO0AhuOur1UUIID0gw#heading=h.825dwqyetrjk

Announcement: Vaccination Clinics

GET THE **SHOT**, NOT THE **FLU!**

2021 Brookline Seasonal Flu Clinic



**SCHLUNTZ GYMNASIUM
BROOKLINE HIGH SCHOOL
115 GREENOUGH STREET**

**SUNDAY, OCTOBER 24, 2021
9 AM - 3 PM**

**REGISTER ONLINE OR BY PHONE
TODAY!**

VISIT [HTTPS://BIT.LY/3TZP989](https://bit.ly/3TZP989), USE THE QR OR
CALL (617) 730-2641



Mask required.



Stay home if you feel ill.



Bring a form of ID and health insurance cards.



Wear loose-sleeved clothing for arm swabs.



Limited flu mist available.
No high dose for 65+



Families welcome.



**OPEN TO BROOKLINE RESIDENTS
ADULTS | SENIORS | CHILDREN* (6 MONTHS AND OLDER)**

Brookline Department of Public Health & Human Services
(617) 730-2300 | www.brookline.ma.gov/health

